

Bvies Breeze

WINTER 2002

ROOIELS BELASTINGBETALERSVERENIGING (REBV) POSBUS 89 BETTYSBAAI 7140
ROOIELS RATEPAYERS' ASSOCIATION (RERA) PO BOX 89 BETTY'S BAY 7140



DAAR IS GEEN LAND SO VER OF WOES GELEË,
GEEN STRAND, O HEER, OF WILDE WATERWEEË,
GEEN HEMELSFEEË IN DIE ONEINDIGHEID -
OF ORALS BLINK U NAAM EN MAJESTEIT.

-TOTIUS-

FROM THE CHAIR... MAKING A DIFFERENCE

Rooiels is an amazing place. It is full of miracles and magic. Like the baboon and the domestic cat gently touching paws on Debby de Vries' stoep. Or an evening of poetry by lamp-light. And quiet crisp brilliant winter days, with colours overflowing. It seems that Rooiels is always speaking to us, laying claim to our better, gentler selves. And it leaves us breathless when we discover our love for it, a passion powerful as the winter seas thundering against our shores. It ignites a passion that desires to respect, protect and honour. We are awed by something more primeval and greater than ourselves and yet so fragile...

In Rooiels we are all rich beyond measure. The fynbos which fills our gardens is part of the richest and most diverse of all floral kingdoms anywhere on earth. This abundant wealth of natural beauty surrounds and sustains us. It inspires. It fills us up until our cup runneth over.

Rooielsers are an equally amazing breed of people. The wealth of human talent here is as great and diverse as the natural environment. How else does one explain that, only in the past few months, five persons from our tiny village received major awards in their respective fields? (And these are only the Rooielsers we know of!) The people of Rooiels are like our fynbos - unique, tenacious, diverse and full of delightful surprises. And as with the fynbos, our community's vibrancy lies in our diversity and uniqueness as persons - not in uniformity and stereotypes. In Rooiels we are free to be ourselves, to be REAL people. (Sometimes we don't even recognise one another when disguised in our "city clothes"!)

I often wonder what Rooiels would have been like by now, were it not for so many unique people giving their talents and passion to Rooiels and to RERA. This year RERA celebrates 30 years of promoting sustainable living in Rooiels. Sustainable living means minimising our human impact as far as possible. It means caring for and respecting our majestic natural environment, trying always to let it have the place of honour. And in the final instance, it means being prepared to give back more to Rooiels than we take from it.

Thank you for daring to be your best, unique, REAL self here. Thank you for caring about Rooiels. Thank you for making a difference.

ESTELLE RAYMOND

OUR VISION IS AN ECOLOGICALLY WELL-BALANCED AREA WHERE HUMANS AND NATURE THRIVE
IN HARMONY

ONS VISIE IS 'N EKOLGIES-GEBALANSEERDE GEBIED WAARIN DIE MENS EN DIE NATUUR SAAM IN
HARMONIE KAN GEDY

480655 £80 087 5529080
LH41-158 (1e0)
Kritzingen!

CONSERVATION CLOUT FROM THIS COMMUNITY

As a village community, I believe we are all very aware of the unique environment that contributes to our wonderful and wonder-filled lifestyles.

There are numerous projects and functions that RERA and other groups have initiated and have successfully maintained in Rooiels. Vital committees contribute time and energy in order that these important functions stay on track.

Bear in mind the improvements made regarding, to name a few, waste management, the Nature Reserve, dune restoration and removal of alien vegetation. The Watchdog role that RERA and others in the community have assumed, has prevented and hopefully, will prevent inappropriate developments in our area. Many will recall the Somchem Saga and currently a close watch is being kept on Erf 324 's EIA.

This community directly and indirectly educates itself and visitors about the appropriate management of and behaviour in a village within the Biosphere. Many of the existing projects and functions maintained in Rooiels fall in line with Conservancy guidelines and objectives.

'A Conservancy' is a voluntary agreement between landowners to co-operatively manage their properties on a good conservation footing in order that a particular natural area is maintained in a pristine condition. (my definition) This is basically what exists in Rooiels already. We are the guardians of a unique village within a unique environmental area.

It may seem ages away, but in 2008, UNESCO will be re-assessing the validity of renewing the international status it has conferred on the Kogelberg Biosphere. It will look to investigating how much progress has been made in improving, protecting and promoting the Biosphere. It is vital to retain this international status, as it does, to some extent, also protect the area against the incomplete processes of transition and the vagaries of politicians.

Maybe it is time for Rooiels to consider becoming a Conservancy Village. It would serve as an example to UNESCO officials that at grass-root level, at Fynbos level, this community cares about the Biosphere by showing its willingness to actively uphold conservation objectives.

DEBBY DE VRIES: CONSERVATION PORTFOLIO

OOREENKOMS

'n Memorandum van ooreenkoms aangegaan deur en tussen die Overstrand Munisipaliteit en Wes-Kaapse Natuurbewaringsraad is opgestel en sal binnekort deur die onderskeie partye geteken word.

Hierdie dokument bepaal dat Erf 1 binnekort as integrale deel van die Uitgebreide Rooiels Natuurreservaat bedryf sal word. Die partye het tot die volgende ooreengekom:

- Natuurbewaring verleen hiermee toestemming aan die Munisipaliteit om Erf 1 as 'n natuurreservaat te bedryf.
- Erf 1 sal as 'n integrale deel van die Rooiels Natuurreservaat bedryf word met nakoming van die verordeninge waaraan die Rooiels Natuurreservaat onderhewig is, asof Erf 1 wetlik deel van die Rooiels Natuurreservaat is.
- Die bedryf van Erf 1 sal voorts onderhewig wees aan die departementele goedkeurings, prosedures en voorskrifte van Natuurbewaring.

Hierdie vergunning is geldig vir solank Natuurbewaring in beheer is van Erf 1. Sou Erf 1 van eienaar verander, sal Natuurbewaring met die nuwe eienaar onderhandel vir die hernuwing van die vergunning. Natuurbewaring neem voorts kennis dat die Overstrand Munisipaliteit begerig is om uiteindelik Erf 1 formeel by die Rooiels Natuurreservaat in te lyf deur middel van verkryging van eiendomsreg deur die Overstrand Munisipaliteit.

ROADS

The exceptional recent storms did very little damage in Rooiels. With the improved road drainage due to graveling and grading to the centre, where possible, the 'river effect' has been considerably reduced. The roads are standing up to the heavy construction vehicles during the rainy season. Incidentally, ALL vehicles are restricted to 20 kmph in Rooiels.

By diverting storm water away from Rocklands Road, flooding at the intersection with Gazania Road seems to be under control.

Congratulations to Ed McNeil for all the hard work and money he put into getting the first speed hump erected in Rooiels. It is working well for vehicles traveling at 20 kmph.

BASIL MOSS. PORTFOLIO: GOOD HOUSEKEEPING



MAKING WAVES

The storm that hit the Cape coast on 24/25 May is reputed to be the worst in 25 years. At Rooiels we had a steady Force 8 Northerly (80 km/h). On Friday morning between 08:00 and 11:00, however, it was Force 9 stuff, around 90 km/h. We have had worse.

I stood in my lounge, watching the boiling cauldron that Rooiels bay had become, and thought I would start worrying when the roof of Andries Brink's balcony went.

I then looked to my left. What I saw above the roof of the Stennet house (Erf 117), had me speechless. It was a wave. I did a quick calculation: the Stennet house is about 300 metres away. The wave was at least 100 metres further out. My eye level was about 7 metres above the ground in our top storey; the height of the Stennet house walls. The top of the Stennet house roof is a metre higher and the Stennet house is about 3-4 metres above sea level. See what I mean? And these giant waves just kept coming, one after the other, throughout the day. George Ryke says he has never seen the likes of it at Rooiels, and George has been around for a long time.

At the time I couldn't believe my eyes, and those of you who were elsewhere would probably doubt my word, but then the newspaper reports came rolling in on the Monday. Between Hermanus and the West Coast swells were higher than 10 meters *on average*. A 17-meter

monster was measured 5 km off the coast at Kommetjie. Apparently these high seas were the result of a deep-sea phenomenon which only occurs every 20 years or so.

When you visit Rooiels again, stand at the perimeter of the flotsam, 3 metres from the Oelz home at 131 Rocklands Road, then turn and look out to sea... You don't need to be a Mark Shuttleworth to gauge the height of those breakers that came rolling in over the bedrock barrier, up the rocky beach and over the 45°, 4-metre high vegetated slope, onto the level of the house.

At Hermanus the waves virtually destroyed a seafront development. At Betty's Bay, winds measuring up to 137km/h flattened three houses and extensively damaged a further eight.

So, we stopped just short of a natural disaster at Rooiels, or so we thought, until the tons of red bait that were dumped above the high water mark on Little Beach started to rot. Now (with apologies to T.S. Eliot): "The world turns and the world changes, but one thing does not change". In all my years, one thing does not change: However you try to disguise it, you shall not change the smell of rotting red bait.

ANDRÉ WAGENER



FULL TO BURSTING. THE SEA ACCEPTS, WIDENS OUR RECEPTION. WE ARE OVERFLOWING AND THE SEA CONTAINS US. AND THEN WHEN WE ARE STRETCHED, WHEN WE ARE BROADENED, OPENED UP TO NEW LIFE, THE SEA GIVES US BACK TO OURSELVES.

-SUSAN ST. JOHN RHEAULT-

SEWERAGE LEVY

The sewerage levy that has been imposed on Rooiels ratepayers has upset a number of our residents. Basil Moss has written a letter of objection to the Area Manager of the Kleinmond Municipality and the matter has been raised at a Federation of Ratepayers meeting.

An extract from the Town Treasurer's response states:

"The sewerage treatment plant availability was decided upon by Council as part of the budget for 2002.

In dealing with the reasons for the imposition of this tariff, it must be borne in mind that tariffs are levied not only on property owners in certain areas, but throughout the Overstrand municipal area and that the effect of the overall tariff "package" varies from area to area.

The new enlarged municipality is being compelled by legislation to levy rates and service charges in an equitable manner and it is inevitable that during this transition phase some communities which previously enjoyed more favourable tariffs will face greater increases, or find themselves paying service fees which formerly were not levied at all.

The provision of a sewerage scheme includes not only the laying of sewer pipes but the construction of sewerage works at huge expense. While certain areas may not yet be connected to the network, they still make use of the sewerage works for the disposal of the contents of septic and conservancy tanks. It is for this reason that the Council regarded the imposition of the levy as reasonable."

SHIRLEY RICHTER
SECRETARY FEDERATION OF
RATEPAYERS.

HANGKLIP MENS' FELLOWSHIP

The Hangklip Mens' Fellowship consists of a group of concerned Christians living in the area. We are basically a co-ordinating organization, providing a voluntary support and communication network in the Hangklip area. By taking an active interest in community affairs we seek to initiate, co-ordinate and steer projects for the betterment of the

community by liaising with other like-minded groups or individuals.

Thus far we have focussed on getting the Betty's Bay neighbourhood support system up and running amongst permanent residents. BB has been divided into wards under volunteer wardens, who check on those who may require assistance, especially the elderly or those in poor health. With Betty's Bay now operating successfully, it is hoped to extend the service to Pringle Bay and Rooiels. It is not intended to compete with, or replace, any Neighbourhood Watch or crime prevention system.

On Mondays, Wednesdays and Fridays it is hoped to provide nutritious meals at about R12 for those unable to cook for themselves. This service is being offered as a satellite of the Fynbos Senior Centre of Kleinmond. As part of this service it is also hoped to establish a medical clinic for basic health checks, medication, dressings etc. This will eventually incorporate social gatherings for bridge, other games and exercises. Regular transport for shopping trips to Kleinmond is also being planned for those without transport, as are home-care visits.

Eventually, funds permitting, an "Abbeyfield Trust" concept of shared housing for elderly folk will hopefully be introduced.

SHOULD YOU WISH TO OBTAIN
MORE DETAILS, CONTACT
GEOFF HARRIS AT 028-273 8164.

"THE NATURE OF WOMAN
IS LIKE THE SEA: IT
APPEARS AS A LIGHT,
GENTLE PRESSURE, BUT
WIELDS A MIGHTY
POWER."

ZONING DETERMINATION

ROOIELS TO BETTY'S BAY
SMALLHOLDINGS

Earlier this year, the Overstrand Municipality appointed a firm of planning consultants to assist the Council professionally in conducting a zoning determination for the smallholding area between Rooiels and Betty's Bay. The need for a zoning determination within that rural

area of the Municipality resulted from the fact that no zoning map had been compiled and approved for the area. The establishment of formal, approved zonings for all properties within the area is considered to be of prime importance to the aspects of effective land use management, development and conservation.

It has been emphasized that the process of zoning determination being conducted on behalf of the Overstrand Municipality does not imply in any way the re-zoning of any property within the area. The process simply involves determination of appropriate zonings for those properties in accordance with guidelines as contained in the ordinance and regulations currently in force.

The first phase of the determination process was completed by mid-June and resulted in a list of the proposed zonings and a draft zoning map in respect of the relevant properties. These were placed on view at locations in Kleinmond and Betty's Bay as well as being communicated to the owners of the relevant properties with an invitation to owners and to interested and affected parties to submit written comments or objections to the consultants engaged in the zoning determination process. Any such comments or objections then would be considered at the outset of phase two of the process that would aim at the defining of the final, approved zonings.

MICHAEL HARRISON

BABOONS

The scientific study on baboons in Rooiels is continuing! Please help us gather important data by reporting ALL baboon "hits" in your home to: Margaret Hensen, Tel: 028-273-8383

If baboons have gained access to your house in an unusual way, or their behaviour has been unusual (aggression, excessive destruction, etc.) please contact one of the following individuals who will perform an on-site assessment.

We need to be aware of new patterns of behaviour so that we can take effective action.

Jenny Stark: 028-273-8961
Chris Burlock: 028-273-8278
Evette Weyers 028-273-8483



ATTENTION:

PHOTOGRAPHERS

This is an early notice that a photographic exhibition to celebrate the 30th Anniversary of RERA is being planned. Further information about the Magical Moments and Memories in Rooiels exhibition will be available in the next Breeze.

In the meantime, start selecting your favourite shot taken in Rooiels.

All topics are acceptable - from 'Beach babes' to 'Birds of a Feather', 'Sandcastles' to 'Sunsets', 'Landscapes - Seascapes - Cloudscapes' etc., Etc.

There is no age restriction.

ROOIELS INLIGTINGSBORD

Die Rooielsvisie bepaal dat visuele besoedeling tot die minimum beperk moet word, gevolglik het die REBV in 2000 gereageer op inligting ingewin deur 'n informele sub-komitee wat bestaan het uit Gerard Scholtz, Joan Mõdinger en Drieka Wilkens. Gevolglik is daar 'n formele komitee onder leiding van Hettie Claasens (REBV) aangestel met Geoff Harris (Hangklip-Kleinmond Toerisme Buro) en Louise du Toit (gekoõpkeer). Breë riglyne is in samewerking met belanghebbendes opgestel en opinies van B&B-eienaars en besighede is ingewerk. African Argitekte is aangestel vir die ontwerp wat op die kennisgewingbord en in die Bries verskyn het vir kommentaar.

Die nodige aanbevelings is in ag geneem en 'n finale skets en voorlegging is deur die toenmalige raadslid, Julia Aalbers, vir goedkeuring aan die Munisipaliteit voorgelê. Die nodige fondse is deur die Finansiële Komitee goedgekeur. As gevolg van die samesmelting na die Overstrand Munisipaliteit het daar 'n vertraging in die oprigting gekom. Die inligtingsbord sal binnekort opgerig word en sal dan alle losstaande aanwysers vervang.

Die REBV wil graag vir mnr. Mike Bartman van die Overstrand Munisipaliteit bedank vir sy ondersteuning en samewerking in hierdie verband.

HETTIE CLAASSENS

MEMBERSHIP OR DONATIONS:

RERA Banking Account Number/ REBV Bankrekeningnommer.
ABSA 29-0016-6152
Branch Code 334-712

Please send details for membership to: The Secretary, RERA, PO Box 89, Betty's Bay, 7141.

BRAND VAN KOPPIE?

Die lang verwagte beheerde brand van die Koppie wat in Mei sou plaasvind is uitgestel tot latere kennisgewing. Volgens Craig Spencer van die Afdeling Natuurbewaring van die Munisipaliteit wat in beheer van die brand sou wees, het die samesmelting van die verskillende munisipaliteite ekstra werkslas meegebring en was daar nie vir hom genoeg tyd om voorbereidings te tref nie. Die vroeë winterreëns het ook 'n rol gespeel. Rooielsers sal vroeëtydige kennis kry wanneer die beheerde brand sal plaasvind.

... EVERY BIT OF UNSPOILT NATURE EVERY BIT OF PARK, EVERY BIT OF EARTH STILL SPARE,
SHOULD BE DECLARED A WILDERNESS AREA AS A BLUEPRINT OF WHAT LIFE WAS ORIGINALLY
INTENDED TO BE, TO REMIND US.

LAURENS VAN DER POST
A WALK WITH A WHITE BUSHMAN



BEKENDE LANDSBAKEN GAAN VERDWYN

Gina Gerber en Bo Duvenhage is die trotse eienaars van die ongewone woning "Ankers". Hierdie geprysde argitekswoning, wat dateer uit die vroeë vyftiger jare, is ontwerp om soos 'n skip te voel: smal, hoog, aan weerskante omring met see en bied 'n uitsig wat manjefiek is.

Die woning laat mens struktureel aan 'n tent dink deurdat die mure uit asbes bestaan wat geanker word deur staal kables. Ou "Ankers" se eie ankers het egter al weggeroes oor die jare, tog staan "Ankers" op geleende tyd! Volgens Gina voel dit omtrent in die boonste verdieping soos 'n skip wanneer die wind sterk waai en die huis van kant tot kant waggel!

Gina en Bo vestig hul permanent op Rooiels. Ankers se dae staan einde toe en sal moet plek maak vir 'n veilige gesinswoning.

ANDREAS CLAASSENS

ON THE FEDERATION OF RATEPAYER'S AGENDA

Buffelsriver Catchment Community Committee

Somchem is to meet with Cape Nature Conservation to discuss the possible inclusion of Portions 71 and 72 into the reserve.

Integrated Development Planning Process (IDP) Budget

The IDP forum has not been a success and the whole process has been disappointing. It should be made clear exactly how much money is available so that reasonable expenditure can be planned. The Federation is considering how they should tackle the next budget and will be sending a letter to Province and an advertisement to the Overstrand Herald objecting to the inequality in our rates.

Service Availability Charges

The Municipality claims that it is legal for them to make these charges. A letter of objection will be sent to the Mayor.

Security / Poaching

The Commissioner of Police has responded to a letter from the Chairman of the Federation by assuring him that anti-poaching is a priority in our area. A meeting will be held at the Kleinmond Police Station to discuss community policing and identify projects that will be pursued by the police.

Arabella Phase 2

The second phase of Arabella to build another 18 hole golf course and 350 houses will go ahead. Senior Management of the Arabella project remain disinterested in entering into dialogue with persons or organisations concerned about the impact this development may have on the area. Amongst other concerns there is insufficient water available for the project and also no housing provided for staff associated with the development thus requiring local ratepayers to provide and fund amenities.

The Rooisands development will also go ahead.

Coastal Management Plan

It has been recommended that a Kogelberg Marine Park be created, stretching from the Steenbras to the Bot River with entrance gates provided to the Biosphere.

Overstrand Conservation Foundation (OCF)

The OCF has applied to the municipality to be recognised as the single channel of communication on conservation issues.

Guest Houses and B&B Regulations

The council has prepared a new list of Guest House and Bed and Breakfast regulations, which they will enforce.

WE'RE NOT OUT HERE TO ROUGH IT. WE'RE HERE TO SMOOTH IT.
THINGS ARE ROUGH ENOUGH IN TOWN.
NESSMUK

FIND TONGUES IN TREES, BOOKS IN RUNNING BROOKS,
SERMONS IN STONES, AND GOOD IN EVERYTHING.
WILLIAM SHAKESPEARE

BI

WATER AFFAIRS

THE BCCC AND THE PROTOCOL

The Buffels Catchment Community Committee (BCCC) was formed on the initiative of Denel Somchem to safeguard the interests of our community. Somchem had rented the water catchment of our reservoir from the Divisional Council for building a static testing facility to develop a rocket launching facility. This programme was terminated by the new government, due to international considerations. The Working Group, on which the BCCC was represented, discussed and agreed to all of the decommissioning and rehabilitation procedures, and monitored the work.

Attention then focussed on Somchem's continuing activities on the dynamic testing site, just above the water of our reservoir, where tests of their new explosives were made. This testing was totally unacceptable to our community, because of the probable effects on the quality of our water. The Working Group continued to negotiate with Somchem concerning testing for and removal of pollutants and rehabilitation of disturbed areas. Somchem finally decided to vacate the site, largely due to the continued pressure mainly by the community..

In order to continue to negotiate with Somchem on cleaning up the area of any possible contamination, both in the short term and longer term, and the rehabilitation of the area, as well as monitoring the effect of the cleanup, a Monitoring Protocol was negotiated.

After tests showing where the pollution occurred, and the concentration of those pollutants, agreement was negotiated concerning the acceptable limit of polluting lead after clean-up, the depth of soil to be removed from the site, the rehabilitation of the site, the buildings and roads to be removed from the site, the monitoring which would be continued on the site and where and how this would be done. Somchem agreed to pay for the monitoring, for two years. They would be liable for the costs of cleanup necessary for the next thirteen years, if pollution was found to exist in that time, which could be due to their activities, and not be caused by the use of the site by the public. **It is thus of major importance that members of the public do not trespass, or do anything on site which could be judged to give rise to pollution. This would vitiate Somchem's guarantee to us.**

The present position:

- The land has been handed over to the Western Cape Nature Conservation Board, who will manage it as a water catchment which could be used by the community for environmental education purposes. Some buildings possibly suitable for this have not been demolished at the request of the Working Committee.
- The WCNC Board is responsible for the removal of aliens in the area. Somchem paid for this until they left the site.
- The soil of the polluted area round the site of Somchem's activity was removed to bed rock, and the levels of lead now found there are those of unpolluted soil background values.
- The Municipality is now responsible for the future testing of our drinking water. The Department of Water Affairs have certified our water to be of good quality.
- Re-seeding of the fynbos with seeds from the area has been repeated and it is now showing promising signs of rehabilitating the area.

AVRIL NUNN

AKWA PURA

Die water uit die Buffelsrivierdam het 'n paar nadele. Dit is skaars, bruin van kleur, het 'n suur pH (4.6) en los daarom aluminium op uit die aluminiumoksied-bevattende klippe in die berge. Hierdie patroon is kenmerkend van waterbronne in die Wes Kaapse fynbos berggebiede.

Wat die voordele betref: Somchem het daarin geslaag om die swaar metale van hul toetsterrein in die opvanggebied te verwyder en het die gemiddelde lood-konsentrasie byvoorbeeld verlaag van 172 dpm tot 17. Verder berig LawGibb se finale verslag oor die Somchem Toetsterrein (November 2000), dat ander metale soos kobalt, nikkel, sink en chroom almal verminder is na internasionale aanvaarbare agtergrondkonsentrasies vir die grondgebied en is almal onder meetbare konsentrasie in die dam se water. Noodsaaklike gesondheidsminerale soos natrium, kalium, kalsium en magnesium, asook ammonia, chloried, fosfaat, sulfaat en nitraat is almal binne normale perke soos voorgeskryf deur die Departement van Bosbou en Waterwese.

Ons is gelukkig om hierdie kleinood op ons drumpel te hê met 'n munisipaliteit wat verdere suiwering toepas om te verseker dat die produk in die kraan ook kiemvry is. Hulle proses versag die water na 'n alkaliese pH van ± 8 , verwyder meeste van die kleur, organiese stowwe en aluminium deur presipitasie tegnieke en vernietig kieme met chloorgas.

Oorblywende oksidasieprodukte soos chloor en trichloormetaan word geïmpliseer as oorsaak van verskeie siektes. Besorgde individue kan hierdie chemikalieë verwyder deur 'n verskeidenheid goedkoop huishoudelike watersuiweraars wat geaktiveerde koolstof bevat. Ek beveel aan dat koolstof, geïmpregneer met silwer, gebruik word om ook die groei van kieme te verhoed. Om enige oorblywende aluminium te verwyder verg duur apparatuur wat distillasie of tru-osmose insluit prosesse wat ook al die noodsaaklike gesondheidsminerale sal verwyder.

KOOS SMIT



SEESKILPAAIE EN RUGBY

Hier tel Dine toe 'n lewende Karet seeskilpadjie (Loggerhead) of *Caretta Caretta* op die stand op tydens 'n stormsee. So groot soos die palm van my hand was hy en té ougat. Terug see toe wou hy nie, hy was te uitgeput.

Het julle al 'n klomp vroumense om 'n deegkom gesien waarin 'n seeskilpadjie rondswem? Dit was 'n ge-ôôg en 'n ge-ag-siestôôg en ge-shame totdat hulle my skoon naar gehad het.

Eers toe ek 'n bietjie huiswerk gaan doen het, het ek besef dat die klein diersie werklik iets besonder is. Hulle broei uit aan die Zoeloelandse kus wanneer die warm Agulhas seestroom op sy naaste aan die kus is. Die kleingood sit dan af water toe en bly in hierdie sirkulêre Agulhas seestroom waar hulle oppervlak organismes soos boublasies (*Physalia*) en daai pers dryfskulpe (*Janthina*) eet. Tussen vyf en tienjarige ouderdom keer hulle terug na vlakker waters waar hulle van krappe, kreef, mossels, swemkrewels en inkvis leef. Eers op twaalf tot vyftienjarige ouderdom gaan die wyfies aan wal om hul eerste eiers te lê.



Daar en dan besluit die moederlikes toe dat die kleinding nie oseanarium toe gaan waar hy die res van sy lewe vir snotneus kindertjies anderkant glas moet kyk nie. Nee, ek moet hom met my boot die rowwe see inneem en in die Valsbaai stroom los, sodat hy weer diepsee toe kan dryf.

Ek vra toe vir Albie Stals se seuns en hul vriende op die strand om die oulike outjie met Albie se boot uit te vat. En daar kry ek die KYK. Die kyk wat 'n rugby-slot wat al Boland skoleproewe gespeel het vir 'n betottelede grys omie gee. En ek besef toe ek het die ding verkeerd aangepak. Dit sou nie help dat ek hulle staan en vertel van my rugbyprestasies (wat al beter word soos ek ouer word) ter inleiding nie.

Ek sê toe, "Manne, as die ding uitgegroeï is, weeg hy oor die 600 kg, en dis swaarder as die Stormers se vaste vyf."

"Rêrig Oom? *Genuine huh?!*" En daar gaat skilpad met entoesiastiese laaities in 'n dobberende bootjie op 'n wilde see diepwater toe.

Nou sien, daar is niks nuuts onder die son nie. Daar was al 'n slim ou in die verlede wat gesê het alles is relatief, $E=MC^2$.

ANDRÉ WAGENER

DANKIE/THANK YOU

Die REBV se posbus het telkens oorgeloop soos wat lidmaatskapvorms en donasies ingestroom het na die vorige uitgawe van die Bries. Baie dankie aan al die lede wat hulle vertroue in die REBV stel en die sterk bedingingsmag wat ons het, verder verstewig.

Ook baie welkom aan lede wat vir die eerste keer by die REBV aangesluit het. Aan die nuwe eienaars en intrekkers dan ook 'n hartlike welkom en ons hoop dat u ook 'n passie vir Rooiels sal ontwikkel.

Tot op datum is daar al R2580 aan donasies van individue ontvang wat aangewend sal word vir die verfraaiing van die ingang tot Rooiels en sal help met die befondsing van die voëlskerm. Die Bootklub het ook 'n ruim skenking van R3500 gemaak, waarvan R2500 help vir die druk van die Bries, en R1000 tot die fonds vir die voëlskerm gaan. Aan elkeen wat bygedrae het, 'n groot dankie!

NUUSFLITS!

In samewerking met die Verkeershoof van die Hangklip-Kleinmond gebied, mnr. Peter Manuel, het die REBV 'n voorlegging ingedien vir spoedbeheermaatreëls in Rooiels. Voorstelle vir spoedbulte op die besige roetes geniet aandag, asook dreineringsprobleme op die paaie. Verskeie probleemsones is bepaal en alle omliggende eienaars sal deur die munisipaliteit gekontak word. Kennisgewings sal ook op die kennisgewingsbord verskyn. In die proses sal ook uitsluitel oor verkeerstekens in Rooiels gekry word. Die REBV se standpunt in hierdie verband is dat visuele besoedeling tot die minimum beperk moet word. Die samewerking en ondersteuning van Raadslid Marilyn van Rensburg word waardeur.

ADOPT THE PACE OF NATURE: HER SECRET IS PATIENCE.

-R W EMERSON-



SEAWATCH

POACHING

A PROBLEM ON OUR DOOR-STEP

A canoeist paddling from Cape Town and up the East Coast of South Africa, reached Port Elizabeth with very varied impressions of his trip. The scenery, the elements and the living creatures provided many memorable experiences, but these were offset by the many very obvious indications of the extensive rape of the marine resources, especially perlemoen, along deserted parts of the coastline. Sadly, the Overberg stretch of shore was observed to be affected with very heavy poaching activities, even heavier than in the Port Elizabeth area, occurring nightly. It is believed that those activities, in fact, are conducted by large, well-organized syndicates. The problem of poaching is drawing nearer and nearer to the Rooiels door-step.

Towards the end of last year, a group of concerned property owners in Betty's Bay decided that poaching in the Betty's Bay Marine Reserve had reached such proportions (up to 30 poachers at a time by day and night) that they posed serious threats to the peace, security and safety of both property and persons. In a document submitted to the Overstrand Municipality, the seriousness

of the problem was emphasized and a disturbing number of problems was listed. Solutions proposed involved steps to restrict and control the access and movement of traffic in the area.

Problems experienced to date with poaching in the immediate area of Rooiels have been perhaps on a smaller scale than those at Betty's Bay and further east along the Overberg coast, BUT THEY ARE ESCALATING! Consequently, the steps taken by the group of owners in Betty's Bay to bring the problems of poaching in the area to the attention of the municipal authorities is welcomed sincerely. The problems are considered to be serious enough to warrant the Council's attention to evolve an early and effective strategy for stamping out poaching in all its facets, once and for all.

Wouldn't prevention be better than cure in Rooiels? Rather control the situation BEFORE the word gets out that Rooiels is a soft target?

MICHAEL HARRISON



HANGKLIP-KLEINMOND SEAWATCH/ SEEWAG

SEAWATCH has been active in patrolling the key areas where poaching is taking place, especially the Betty's Bay marine reserve. Last summer poaching had more than trebled in the reserve and two gangs were poaching in broad daylight. A Kleinmond detective and a Caledon public prosecutor are under investigation for being on the poacher's payrolls. This explains why the poachers could be so brazen.

SEAWATCH has also spent some time at Rooiels, looking out for poaching in the hardest hit areas. The ideal would be to get more full time law officials working exclusively on protecting the marine life. With this in mind SEAWATCH and Craig Spencer have been negotiating with Marine Coastal Management (MCM) for quite some time and there has been positive response. The law enforcement officers will operate under the Municipality's Nature Conservation Department.

SEAWATCH's funding from WWF for four years ended in March and we hope to obtain funding from the Table Mountain Fund (British) as well as from MCM. The Rooiels Boatclub has generously contributed to SEAWATCH out of their yearly crayfish competition's money. Other Rooielsers have also donated money to SEAWATCH. Your support is vital as well. Help us protect our marine life by joining Seawatch.

EVETTE WEYERS

HELP OM ONS SEE LEWE TE BESKERM.
SLUIT AAN BY SEEWAG TEEN SLEGS R20 PER PERSOON PER JAAR.
HANGKLIP-KLEINMOND SEAWATCH/SEEWAG, POSBUS 457, BETTYSBAAI, 7141

REPORT ALL SUSPECTED POACHING BY CALLING

SEAWATCH/SEEWAG

AT

083 2122252/3



FLOODS

THE RICHTER SAGA

During the heavy rains last winter I was busy working upstairs and listening to the rain pounding on the roof. At about four o'clock I went downstairs to make a cup of tea and found to my horror that the garage was under 75mm of water and was one centimetre from entering the house itself. Debris floating in the garage included a number of scorpions and crickets.

I was fortunate to have guardian angel Geoff Harris come to my rescue by digging small trenches up and down the road to divert some of the water. The following day the municipality eventually arrived after stern words from André Wagenaar. It took two days to pump the water from the lake surrounding our house. During that time it felt as if I was Noah's proverbial wife living in an ark.

During this summer heavy rains have again flooded our garage twice but just missed coming into the house. The speed at which the water flows down Gazania and Rocklands road to converge on our erf is awesome. Last April within 20 minutes of the rain starting two rivers literally appeared from nowhere and it was all hands on deck to divert floodwater away from the garage.

I was pleased to see that the municipality has built two humps and constructed run off points along the two roads. I feel further drainage may be required. In the meantime we await the next rains to see if these measures will be effective.

SHIRLEY RICHTER

Update: The Richter's are now high and dry! (Ed.)

BOOK REVIEW:

KOGELBERG BIOSPHERE RESERVE

BY AMIDA AND MARK JOHNS

Price:R49-95; obtainable from gift shop at Harold Porter Gardens
Struik, 2001, ISBN:1 86872 702 5

Mark and Amida are residents of this area and part of the management of the Kogelberg Biosphere Reserve. This book delights with its beautiful photographs and brief descriptions of the landscapes, the needs of its ecosystems and the many special plant species in this spectacular area. It is a precious reminder of the beauty of this biosphere reserve situated only 40 kilometres from Cape Town and the urgent need to sustain it.

In closing, it offers 15 practical ways to support and sustain the biosphere reserve:

- Conserve as much natural vegetation on your property as possible.
- Learn about the plants and animals in your area.
- Keep to footpaths to avoid damaging dunes and rocky shores.
- Plant your garden with indigenous plant species from the area to avoid hybridization.
- Learn to identify invasive aliens. Remove them from your property.
- Do not feed wild animals, especially baboons.

- Keep your waste out of their reach.
- Eliminate fencing to allow animals to move between properties.
- Help keep track of the leopard population by reporting sightings to Nature Conservation.
- Take precautions when making a braai fire.
- Plan and implement a fire control strategy for your smallholding.
- Control your pets, especially cats and dogs that catch birds and small animals.
- Find solutions that avoid the killing of problem animals.
- Recycle waste and water and use dry sewerage systems.
- Join a local conservancy or a conservation organisation.
- Obey environmental regulations and report unlawful activities.

"...the Kogelberg reserve is so rich in species and so many of the species are both so beautiful and rare.. (that) this reserve should receive more efficient protection than perhaps any other in the country."

Dr HB Rycroft (Director of the National Botanical Gardens, 1953)

ESTELLE RAYMOND

ROOIELS BOOTKLUB NOODSLEUTEL

Die REBK word gereeld versoek om toegang in noodgevalle tot die glipweg te verleen. Die afgelope seisoen het ons byvoorbeeld drie gevalle gehad van vaartuie van elders wat naby Rooiels onklaar geraak het, en wat vanaf ons glipweg herwin is. Die glipweg is ook 'n noodtoegang vir die NSRI en die SAPD. Twee lyke van drenkelinge is byvoorbeeld tydens die afgelope seisoen deur polisieduikers vanaf ons glipweg opgespoor en aan wal gebring. Inspekteurs van Seevisserye het ook toegang tot ons glipweg om daarvandaan hul inspeksies per boot uit te voer. Joe Hensen hou die nood sleutel en, indien hy nie opgespoor kan word nie, kan toegang by my verkry word.

ANDRÉ WAGENER, VOORSITTER: RE BOOTKLUB

FLOODS

THE RICHTER SAGA

During the heavy rains last winter I was busy working upstairs and listening to the rain pounding on the roof. At about four o'clock I went downstairs to make a cup of tea and found to my horror that the garage was under 75mm of water and was one centimetre from entering the house itself. Debris floating in the garage included a number of scorpions and crickets.

I was fortunate to have guardian angel Geoff Harris come to my rescue by digging small trenches up and down the road to divert some of the water. The following day the municipality eventually arrived after stern words from André Wagenaar. It took two days to pump the water from the lake surrounding our house. During that time it felt as if I was Noah's proverbial wife living in an ark.

During this summer heavy rains have again flooded our garage twice but just missed coming into the house. The speed at which the water flows down Gazania and Rocklands road to converge on our erf is awesome. Last April within 20 minutes of the rain starting two rivers literally appeared from nowhere and it was all hands on deck to divert floodwater away from the garage.

I was pleased to see that the municipality has built two humps and constructed run off points along the two roads. I feel further drainage may be required. In the meantime we await the next rains to see if these measures will be effective.

SHIRLEY RICHTER

Update: The Richter's are now high and dry! (Ed.)

BOOK REVIEW:

KOGELBERG BIOSPHERE RESERVE

BY AMIDA AND MARK JOHNS

Price: R49-95; obtainable from gift shop at Harold Porter Gardens
Struik, 2001, ISBN: 1 86872 702 5

Mark and Amida are residents of this area and part of the management of the Kogelberg Biosphere Reserve. This book delights with its beautiful photographs and brief descriptions of the landscapes, the needs of its ecosystems and the many special plant species in this spectacular area. It is a precious reminder of the beauty of this biosphere reserve situated only 40 kilometres from Cape Town and the urgent need to sustain it.

In closing, it offers 15 practical ways to support and sustain the biosphere reserve:

- Conserve as much natural vegetation on your property as possible.
- Learn about the plants and animals in your area.
- Keep to footpaths to avoid damaging dunes and rocky shores.
- Plant your garden with indigenous plant species from the area to avoid hybridization.
- Learn to identify invasive aliens. Remove them from your property.
- Do not feed wild animals, especially baboons.

- Keep your waste out of their reach.
- Eliminate fencing to allow animals to move between properties.
- Help keep track of the leopard population by reporting sightings to Nature Conservation.
- Take precautions when making a braai fire.
- Plan and implement a fire control strategy for your smallholding.
- Control your pets, especially cats and dogs that catch birds and small animals.
- Find solutions that avoid the killing of problem animals.
- Recycle waste and water and use dry sewerage systems.
- Join a local conservancy or a conservation organisation.
- Obey environmental regulations and report unlawful activities.

"...the Kogelberg reserve is so rich in species and so many of the species are both so beautiful and rare.. (that) this reserve should receive more efficient protection than perhaps any other in the country."

Dr HB Rycroft (Director of the National Botanical Gardens, 1953)

ESTELLE RAYMOND

ROOIELS BOOTKLUB NOODSLEUTEL

Die REBK word gereed versoek om toegang in noodgevalle tot die glipweg te verleen. Die afgelope seisoen het ons byvoorbeeld drie gevalle gehad van vaartuie van elders wat naby Rooiels onklaar geraak het, en wat vanaf ons glipweg herwin is. Die glipweg is ook 'n noodtoegang vir die NSRI en die SAPD. Twee lyke van drenkelinge is byvoorbeeld tydens die afgelope seisoen deur polisie-duikers vanaf ons glipweg opgespoor en aan wal gebring. Inspekteurs van Seevisserye het ook toegang tot ons glipweg om daarvandaan hul inspeksies per boot uit te voer. Joe Hensen hou die noodsleutel en, indien hy nie opgespoor kan word nie, kan toegang by my verkry word.

ANDRÉ WAGENER, VOORSITTER: RE BOOTKLUB

29

SEAWATCH

POACHING

A PROBLEM ON OUR DOOR-STEP

A canoeist paddling from Cape Town and up the East Coast of South Africa, reached Port Elizabeth with very varied impressions of his trip. The scenery, the elements and the living creatures provided many memorable experiences, but these were offset by the many very obvious indications of the extensive rape of the marine resources, especially perlemoen, along deserted parts of the coastline. Sadly, the Overberg stretch of shore was observed to be affected with very heavy poaching activities, even heavier than in the Port Elizabeth area, occurring nightly. It is believed that those activities, in fact, are conducted by large, well-organized syndicates. The problem of poaching is drawing nearer and nearer to the Rooiels door-step.

Towards the end of last year, a group of concerned property owners in Betty's Bay decided that poaching in the Betty's Bay Marine Reserve had reached such proportions (up to 30 poachers at a time by day and night) that they posed serious threats to the peace, security and safety of both property and persons. In a document submitted to the Overstrand Municipality, the seriousness

of the problem was emphasized and a disturbing number of problems was listed. Solutions proposed involved steps to restrict and control the access and movement of traffic in the area.

Problems experienced to date with poaching in the immediate area of Rooiels have been perhaps on a smaller scale than those at Betty's Bay and further east along the Overberg coast, BUT THEY ARE ESCALATING! Consequently, the steps taken by the group of owners in Betty's Bay to bring the problems of poaching in the area to the attention of the municipal authorities is welcomed sincerely. The problems are considered to be serious enough to warrant the Council's attention to evolve an early and effective strategy for stamping out poaching in all its facets, once and for all.

Wouldn't prevention be better than cure in Rooiels? Rather control the situation BEFORE the word gets out that Rooiels is a soft target?

MICHAEL HARRISON



HANGKLIP-KLEINMOND SEAWATCH/ SEEWAG

SEAWATCH has been active in patrolling the key areas where poaching is taking place, especially the Betty's Bay marine reserve. Last summer poaching had more than trebled in the reserve and two gangs were poaching in broad daylight. A Kleinmond detective and a Caledon public prosecutor are under investigation for being on the poacher's payrolls. This explains why the poachers could be so brazen.

SEAWATCH has also spent some time at Rooiels, looking out for poaching in the hardest hit areas. The ideal would be to get more full time law officials working exclusively on protecting the marine life. With this in mind SEAWATCH and Craig Spencer have been negotiating with Marine Coastal Management (MCM) for quite some time and there has been positive response. The law enforcement officers will operate under the Municipality's Nature Conservation Department.

SEAWATCH's funding from WWF for four years ended in March and we hope to obtain funding from the Table Mountain Fund (Brittish) as well as from MCM. The Rooiels Boatclub has generously contributed to SEAWATCH out of their yearly crayfish competition's money. Other Rooielsers have also donated money to SEAWATCH. Your support is vital as well. Help us protect our marine life by joining Seawatch.

EVETTE WEYERS

HELP OM ONS SEE LEWETE BESKERM.
SLUIT AAN BY SEEWAG TEEN SLEGS R20 PER PERSOON PER JAAR.
HANGKLIP-KLEINMOND SEAWATCH/SEEWAG, POSBUS 457, BETTYSBAAI, 7141

REPORT ALL SUSPECTED POACHING BY CALLING

SEAWATCH/SEEWAG

AT

083 2122252/3

19



ERF 324

LATEST DEVELOPMENTS

STRICT REQUIREMENTS IMPOSED BY ENVIRONMENTAL AFFAIRS FOR ENVIRONMENTAL IMPACT ASSESSMENT REPORT

After considering and accepting the developer's scoping report, the Department of Environmental Affairs has now called for an Environmental Impact Assessment Report, subject to the following requirements:

1. It needs to be clearly stated that the only building development rights that the landowner enjoys is the right to a primary residence. Its location and design are subject to environmental and planning approval. The placing of a reservoir on the property does not provide for extra rights or allowances.
2. Please ensure that the legal owner of whatever development is clarified: Mclagan Real Estate, Mrs P Mclagan or other.
3. It is of concern that the Erf has not been properly contextualised within the Kogelberg Biosphere Reserve, and its influence on the application. Its biosphere zonation needs to be clarified and discussed. The guidance of the draft Western Cape Coastal Zone Policy on this application should be considered and highlighted. This Directorate: Environmental Management is using the bioregional planning guidelines from this policy in the assessment of coastal applications before it. While it is noted that it has no statutory status, it provides the most appropriate planning information in many coastal areas.
4. The considerable opposition by the majority of the local community is noted. The principles of the National Environment Management Act requires this Directorate to consider the local community in its decision-making on any development proposal.
5. The public participation process for the EIR phase will need to be thorough, transparent and inclusive. It is suggested that if further advertising is necessary that both local and regional newspaper (sic) are used.
6. This Directorate is not in favour of any development that can be categorised under your alternative "Additional Development". This Directorate suggest that the EIR focus on the "No-Go" and "Limited Development" alternatives. The "No-Go" alternative should consider alternative placements of the single dwelling. Its maximum dimensions should be detailed. The "Limited Development" alternative should consider as alternatives, two to a maximum of seven unit developments, their placements, dimensions and impacts (both positive and negative). Each alternative should have photos from the East, West and South, that have superimposed images of the proposed developments on them, to serve as a visual tool. The visual impact of any development on this scenic area will be a major consideration in the final decision-making process.
7. The provision for services to any developments must be detailed. The supply of potable water is of concern. If a borehole is proposed, then the risk of placing a borehole so close to the sea with the potential for a saltwater intrusion must be discussed. If a borehole is proposed then appropriate testing will need to be conducted according to an Environmental Management Plan which has been approved by this Directorate.
8. Please map out the occurrence of the *Diastella* populations, any wetlands, seeps and other significant influencing biotic or abiotic feature.
9. The impact of providing for adequate firebreaks around any buildings proposed must be considered.
10. This Directorate notes the comments made by Mr G Harris regarding the impacts of opening the Hangklip Road (sic - Porter Drive), especially with regard to the poaching of marine resources. These impacts will have to be mitigated, if applicable.
11. Please explain further the content and context of section 7.3b of the Scoping Report.
12. This Directorate is interested in the proposed future management plan for the remainder of the Erf, should some development be approved."

The Department furthermore suggested that the developer employs an independent environmental consultant to review and comment on the draft EIR, "considering the high-profile nature of this case and its legal history."

Since 1971 Rooielsers have consistently and successfully protected this pristine property from subdivision by various developers. Over the years hundreds of objections were received from the community and various organisations. Each and every person has and can make a difference. There are some things more precious than money. (Ed.)

ROOIELS HEALTH & HACKIT CLUB



IAN, HETTIE AND ANUTA AT A HACK PARTY

NAMENS DIE HHC NOOI HETTIE CLAASSENS EN HAAR KOMITEE U HARTLIK UIT NA DIE VOLGENDE HACKS:

3 AUGUSTUS; 7 SEPTEMBER;
5 OKTOBER; 2 NOVEMBER;
7 DECEMBER

ONTMOET/MEET: ERF 179,
BLENNARD, AT 8:00
VERVERSINGS AGTERNA
REFRESHMENTS AFTERWARDS

WAR ON THE ALIENS

During the last PROTEA meeting, Craig Spencer reported on a visit by officials of the Dept of Agriculture, to ascertain the extent of the infestation of the New Zealand Christmas trees and the accompanying problems, of this species. It was also reported that he held inspections at the various nurseries in the area, in conjunction with Darelle Snyman from his department, and a representative from the Department of Agriculture, Ms Susan de Kock. The only nursery not harbouring invasive alien vegetation was the Harold Porter Botanical Garden nursery. Amongst invaders found were Lantana and New Zealand Christmas trees. All the nurseries were issued with notices giving them a certain period of time to dispose of the invasive alien plant species.

CLEARING OF ROAD VERGES OF ALIENS

The PROTEA Project has started clearing aliens on road verges in Pringle Bay. All towns will receive attention, and an area of approximately 3 m from the edge of the road, on both sides will be cleared of alien vegetation.

Herbicides will also be used to combat re-growth of certain species of invasive vegetation.

Property owners are requested to co-operate with the project and the Municipality. Kindly address any queries to the Project, rather than to the contractors, who are merely carrying out tasks set for them.

No time-frame has been set for these tasks, as the work is slotted in-between smallholding clearing.

LEPTOSPERMUM LAEVIGATUM

(AUSTRALIAN MYRTLE / AUSTRALIESE MIRT)

This large, densely branching, spreading shrub or tree can reach 8 metres in height, and has been declared a category 1 weed.

Introduced into South Africa in the early 1800's to act as a stabilisers of drift sands on the Cape Flats, and later used as a hedge plant in gardens, it very soon spread into the surrounding countryside.

The Entomological Society of Southern Africa's African Entimology Memoir No 1 (June 1999), specifically lists this invader as "particularly invasive in the unique and endangered Cape Floristic Kingdom (Fynbos)... (and the) worst infestations occur at Hermanus, Kleinmond, Bredasdorp..." It is even rated as the fifth worst invasive plant species in the Fynbos biome!

Leslie Henderson's latest version of *Alien Weeds and Invasive Plants - A complete guide to declared weeds and invaders in South Africa*, describes this plant as follows:

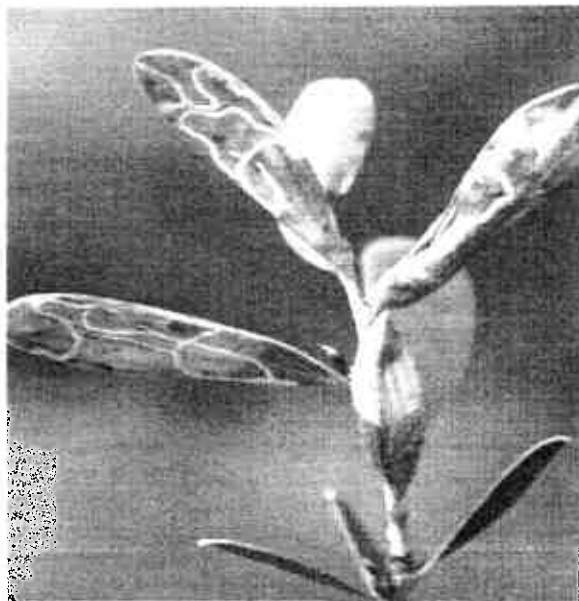
Grey bark, old stems twisted and furrowed with bark flaking in thin strips. Leaves are dull greyish green, leathery and 15 - 30 mm long. The flowers are white and solitary, up to 20 mm across and the plant flowers during August to October. The seeds are small and in fire-resistant capsules.

Mechanical control of this plant, without the application of herbicide, results in multi-stemmed coppicing, which worsens the problem.

A visit to the area by the biological control officer of the Working for Water Programme, identified the leaf-mining moth, *Parectopa thalassias* at 4 of the 5 sites. The moth lays eggs on the leaf and the larvae hatch in 7 days. They penetrate the leaf and feed on the internal leaf tissue, forming a linear tunnel. Later the tunnel turns into a mine, and eventually, the leaf appears inflated. Only new growth is targeted by the moth, and this cycle accounts for \pm 50% leaf drop in Australia - the percentage is estimated to be much higher in South Africa, as the natural enemies of the moths, are not present.

It is envisaged to establish nursery sites in our area for both the moth and a seed-eating insect, the combination of which will severely impact on the Myrtle "populations" in our area.

A very entertaining outing for children (of all ages!) would be to identify plants affected by the moth. Look for prematurely brown, linear marked or bloated leaves, or for silken cocoons in partly folded leaves (when the larva is fully developed, it exits the leaf, spins and pupates in the cocoon).



ROOIELSERS VEREER

"A PROPHET IS NOT WITHOUT HONOUR..."

DAVID AND MARIE PHILIP:

Dr Marie Philip and Dr David Philip were deeply pleased when the University of the Western Cape honoured them by conferring on each of them the honorary D Litt of their university, on March 15th this year. They have lived and worked in the Western Cape and therefore the recognition of their years of publishing "Books that Matter for Southern Africa" in their home province was particularly gratifying. Many of those books, which are now cherished, were then banned and they needed courage to persevere.

The ceremony itself was moving and joyous as the many graduates received heartfelt applause from fellow students and their families. Resplendent in his attire at the ceremony was the Praise Singer, who sat on the platform with all the colourfully gowned academics. When he finally rose to sing, Marie and David smiled in wonderment as it dawned on them that he was THEIR Praise Singer, heralding their proceeding on to the platform for their capping. What well-deserved honour for two wonderful people.

David and Marie also received honorary doctorates from the University of Natal last year

JONATHAN AND KAY COOPER

DEBBY DE VRIES

Debby de Vries won a gold medal for Rooiels (and South Africa) at the 7th World Flower Show in Glasgow held in June. Armed with our unique Rooiels fynbos, she sailed through in the State of Suspension category. The competition, which is held every three years, attracts approximately 800 floral artists from 30 countries.

DINE VAN ZYL

Dine van Zyl is op Vrydag 21 Junie deur die Suid-Afrikaanse Akademie vir Wetenskap en Kuns bekroon met die Eugene Maraisprys vir haar boek *Slagoffers*. Die bekroning het plaasgevind by 'n luisterryke geleentheid op Stellenbosch, waartydens onder andere ook Dr Anton Rupert en Mimi Coertse vereer is.

MARIUS WEYERS

Marius returned a couple of weeks ago from the UK where he had a seven week run of Athol Fugard's play 'Sorrows and Rejoicing' - which will be staged soon at the State Theatre in Pretoria. Just before recovering from jetlag, he and Evette flew to Jo'burg where he received yet another award. This time from the citizens of Randburg.

BIRD CHAT

Winter arrived on May 6th in Rooiels - a chilly squally day with lumpy seas, then Autumn returned, a fleeting splash of summer. By mid-month the North-West- driven gunmetal seas of winter had returned. Such is the nature of our unpredictable weather pattern! Furl-winged gannets (53) in their dozens dive for small fry close to the water's surface, huddles of Kelp Gulls (312) and assorted terns crouch head- to- wind on the beach while an oystercatcher's (244) call cuts the chill air and the tell-tale spoor of the otter surfaces as Rooiels is returned to its "natives". White-chinned petrels (32) and Sooty shearwaters (37) glide in waves' troughs, pelagic opportunists on the look-out for an easy meal. The season's snap- shots are many.

Much has occurred in birding since the last Bird Chat appeared in the Breeze (editorial glitch!). Of the many highlights was the Cape Bird Club's Rarities Committee's acceptance of TWO reports we submitted. Both observations were written about in previous Bird Chats and I have included the acceptance for your reading too. Rarities are spotted because "something" is different about the bird to the "normal" local species, different plumage, call, general appearance or behaviour - it stands out. This means Rooiels has had three rarities confirmed since we began our records right back in 1987.

As an owl freak, I had the enormous pleasure of seeing two owls this year. A Barn Owl (392) flew down into the garden at dusk. This wasn't the first time we had seen this owl in our immediate area. All owls are habitual and these diurnal birds patrol specific territories. The last time we saw it was when Charlie (or relative) flushed it from its choice of daytime roost in the Richter's myaporum hedge. For the first time in eight years we had the pleasure of seeing a Cape Eagle Owl (400) on Porter Drive in the smallholdings area, close to Mike Harrison's. It was a very windy March evening and we suspect it had been forced down by the blustery conditions. In early May Mike phoned to say he had seen the owl on the roof of his house at dusk, alerted to it by an agitated Familiar Chat (589) and a previous "chat" between us.

These owls, the largest in our region, are uncommon and among the most powerful in the world. Two sightings in the same area is indicative of residency which is seriously good news for us all. Many owls are little known by the very nature of their lifestyle. The Cape Eagle owl has naartjie-coloured eyes and huge feet which are feathered whitish. May to August is also the breeding season for these spectacular birds and the sightings area is ideal habitat, so I hope!

These creatures of the night with their noiseless flight, acute hearing, vision and expression-filled faces take over from the day shift of eagles, harriers, hawks, buzzards, et al. and are Nature's pest controllers of the dark hours. One enlightened sugar cane farmer in Natal were plagued by cane rats. He had tried every conceivable form of pesticide and eradication and took a suggestion to heart, erecting owl boxes. These eventually attracted the previously persecuted Barn Owls who, content with the free food and housing offered, obliged him and repaid him handsomely. The cane rats are under control, the Barn Owl population has boomed AND the big plus has been that scientific research has been possible, as the owls are human tolerant. (This story was told on 50/50 and has been the subject of several TV documentaries.)

Birding in Rooiels is never dull - plans for the construction of the bird hide on the Rooiels River are well under way and great care had been taken to benefit all interested parties.

Happy birding and don't forget the bird lists at the Rooiels Village Shop - just a small donation to Sea Rescue. We always appreciate news of your sightings.

ALISON AYRE

CBC Rarities Report

Rare Birds Committee Report:
Circulation No 10

Since the last report of this committee (a long distant memory) a total of seventeen records have been vetted by the committee, including two sets of duplicate submissions of the same record. Of these, four records were recirculations of previous submissions for further consideration as the committee had not reached consensus during the original vetting process. The accepted records are as follows:

African Golden Oriole (544) - An adult male African Golden Oriole was observed feeding in a garden in Rooiels on 13 January 2001. (Alison Ayre, Helen Jones).

This is an exceptional record as this species is only recorded in the extreme north of South Africa. This is the first confirmed record for the Western Cape.

Red-billed Quelea (821) - A flock of at least 11 Red-billed Queleas was found at Rooiels on 1 March 2001, and remained in the vicinity for a significant period of time. (Alison Ayre, Helen Jones). The last date recorded on the submission was 23 March, but it is understood that birds were seen for some time after this. The flock included at least two breeding males and a mixture of females and juveniles.

RECYCLING BINS AND TRAILER

The recycling bins and trailer will remain where they are. This was finally resolved by the Council on 25 June.

In the previous edition of the Breeze, it was reported that the owner of the adjoining property had threatened legal action and demanded that the municipality move the facility. Various options were considered, but it was found that irrespective of where the facility is located, other property owners will have similar objections and arguments against the placing of thereof. The problem cannot be solved by just moving it elsewhere. The present location was found to be the most practical and most environmentally acceptable. Apart from the complainant, almost all Rooiels residents, interest groups, officials and visitors favour the present location of the facility. (A couple of years ago the municipality offered the owner a land swap, but it was declined by her. Perhaps this option could once again be pursued.)

While we empathize with the owner, a great deal of money and effort has already been expended in connection with the facility. An extensive public participation process and

environmental impact assessment was done by LawGibb before formal approval was granted.

Over the years RERA has contributed considerably by making this area more aesthetically and environmentally acceptable. The Rooiels community erected the wooden enclosure, bought the recycling bins, painted the bins and trailer fynbos green and baboon-proofed the trailer. All of this was done to minimise any adverse impacts in keeping with our Rooiels Vision. The area is now neat, clean and aesthetically pleasing compared to the eye-sore it once was. Our next project is to plant indigenous trees around the wooden enclosure. This project will be carried out by committee member Hettie Claassens and her team. Geoff and Lyn Harris has kindly donated the trees.

We are grateful to the Council for letting sanity prevail on this issue. We are especially grateful to Mike Bartman, Craig Spencer and municipal officials who, through the years, worked tirelessly with us in making our satellite waste transfer station a shining example of how a community can tread softly on the earth and minimise the negative effects of its waste disposal.

PERLEMOEN FACTORIES: ARE THEY ACCEPTABLE FOR OUR AREA?

We share KOBIO's concern about the Minister's approval of the proposed abalone facility adjacent to Pringle Bay. (KOBIO news Vol 9 2002). If the facility is allowed to go ahead with all opposition being bull-dozed aside and the wishes of a whole community being ignored, the danger of Rooiels facing a similar calamity in the future becomes real. Already there are strong, but as yet unconfirmed, rumours of an application to be made for a similar facility very near to Rooiels.

ROOIELS NATURE RESERVE: FIVE YEARS AFTER THE PRESCRIBED CONTROLLED BURN.

The coastal plain vegetation of the Rooiels Nature Reserve is a transitional mix from coastal mountain fynbos into a coastal rocky fynbos and dune scrub. At five years post-fire in the Reserve, the vegetation displays its fynbos elements with clumps of Proteaceae, notably *Serruria adscendens* as well as *Restio* and *Erica*. Closer to the sea the more scrub vegetation remains dominated by the herbaceous *Pelargonium*, the Asteraceae, *Metalasia* and *Athanasia* and scatterings of resprouting *Rhus* and *Colpoon* (*Osyris*).

Fire is a natural event in the fynbos where lightning strikes are not followed by significant rainfall. Striking high ground, these fires are swept along until abated by rain or the coastal shores. Plants have thus evolved over millions of years with fire as a natural environmental factor. As a result fynbos plant species not only survive fire but also require fire to complete their life cycle or to remain vigorous. The presence of fire regenerated species in a community of plants is indicative of its long-time association with fire.

Suppression of this vital ecological process leads to a dramatic reduction in the number of species in a fynbos community, favouring the survival of a few long-lived

shrubby species such as *Rhus* and *Metalasia* at the expense of overall plant diversity.

In the absence of fire, short-lived species may die off, maintaining their presence in the community only as soil-stored seed or as an underground rootstock or bulb. If fire is too long in the coming this store of seed may rot and dwindle, diminishing the species regenerative ability. Many fynbos species are however able to store seed underground for extended periods of time, some up to 20 years. A lack of fire also creates a problem for species that do not store their seeds in the soil but on the vegetative plant itself, such as the *Leucadendron* species. When these plants become too old they die without leaving any seed behind and so disappear from the community.

Diverse veld forms the basis for general diversity on all levels. Fire, at the correct time of year and the right interval, is the foundation for fynbos biodiversity. The long-term conservation of Fynbos in Rooiels is thus dependent on the continued sound ecological management of the remnant patches of natural vegetation in and around the coastal town.

MARK JOHNS
MANAGER: KOGELBERG BIOSPHERE RESERVE

Jenny B LANDSCAPES & IRRIGATION

- Concept creation & comprehensive design service
- Free landscape quotes
- Consultations
- Supervised garden & irrigation installations
- Ongoing horticultural maintenance - quarterly visits
- Alien eradication & management of re-growth

Box 35 Pringle Bay Tel/Fax 028 273 8343 Or 8186
Cell 082 925 7500 e-mail: jennyb1@telkomsa.net

WHO OWNS THIS LANDSCAPE?

HAS OWNING ANYTHING TO DO WITH LOVE OF IT
AND I HAVE A LOVE AFFAIR,
SO NEARLY HUMAN WE EVEN HAVE QUARRELS.
WHO OWNS THIS LANDSCAPE?
THE MILLIONAIRE WHO BOUGHT IT OR
THE POACHER STAGGERING DOWNHILL IN THE EARLY
MORNING
WITH A DEER ON HIS BACK...

OR I WHO AM POSSESSED BY IT.

NORMAN MCCAIG
A MAN IN ASSYNT

DIE ROOIELS NATUURRESERVAAT HERBARIUM

Ongeveer 120 gepersde, gemonteerde en geklassifiseerde plantmonsters is tydens 'n onlangse REBV komiteevergadering oorhandig. Die versameling is in vyf lêers geliasseer en kan by Gerard en Anuta Scholtz se huis besigtig word totdat 'n permanente geskikte tuiste vir die herbarium gevind word. Die versamel van plantmonsters het net na die brand vyf jaar gelede begin en sluit die belangrikste blomplante in wat sedert die brand opgekom het. Hier volg 'n voorbeeld van 'n monsterbeskrywing uit die herbarium:

Orchidaceae

Plant ID: 21

Genspec no: 1236

Pterygodium catholicum (L.) Swartz

Common name: Moeder/Ouma/Mammakappie

Habit Details

Precise Locality: Level bank above coastal bank, mostly within clumps of grass

Soil Type: sandy

Abundance: occasional

Plant Attributes

Specimen Height (m): 0.17

Height: Up to 35 cm

Flower colour: pale yellow

Details: Flowers with yellowish green sepals and lip, often flushed red and apex of lip appendage of lip dentification. Sept-Nov. Bokkeveld Mts to PE

Time since fire: 7 months

Gradient: level

Collector: G&A Scholtz

ID by: T Hall

Date: 17/1 2/97

Mmkidd pg no: 116(WCF-176)

INGANG TOT ROOIELS VERFRAAI

Daar is lankal reeds 'n behoefte om die Rooiels-ingang tot by die eerste sirkel op te gradeer en te verfraai. Met die raadsbesluit dat die vullisooraastasie moet bly waar dit tans is en die inligtingsbord wat binnekort gaan verskyn, het die REBV die wiele nou aan die rol gesit. Die bekende fynbos landskapontwerper Jenny B, het haar dienste gratis aangebied en het sy saam met Hettie Claassens en andere van die hackgroep die gebied oorkant die besigheidsdistrik beplan.

Entoesiastiese Rooielsers het reeds ruim donasies gemaak vir die aankoop van bome en fynbos. Die Munisipaliteit het intussen water na die gebied aangelê en Ernst Thompson het die sproeistelsel geskenk wat hy ook sal onderhou. Dine en André Wagener het verwoed aan die verfraaiing van die sirkels begin werk deur klippe aan te ry en inheemse plante aan te plant. En dan daag Basil Moss kortkorf op met positiewe raad en bystand. Nou wag ons almal op 'n vriendeliker en mooier ingang tot ons dorp - en op die somer om te sien hoe alles gaan beginne groei.

PLANT YOUR GARDEN WITH INDIGENOUS PLANT SPECIES FROM
THE AREA TO AVOID HYBRIDIZATION.



DINE & KNIBBEL
'CIRCLES IN THE FYNBOS'



MAGIC MOMENTS IN ROOIELS

WOORDE IN DIE WIND

Petra Müller het uit haar nuutste digbundel, "Die aandag van jou oë" kom voorlees op 'n 'Woorde in die Wind'-geleentheid. Dit was 'n aand van kerse, sop en dop, en elkeen moes sy eie stoel saambring. Dit is deur 42 mense bygewoon en daar is met groot entoesiasme meegeleef in die klank en ritme van die voorlesing.

Toe Petra vooraf vra watter soort gemeenskap ons op Rooiels het, het André geantwoord, 'n gemeenskap met passie. Soveel passie, dat toe ek met die idee vorendag gekom het om skrywers hierheen te nooi, daar geweldige entoesiasme was. Hoekom moet ons agter die skrywers aanry Kaap toe, of Stellenbosch toe? Bring hulle hiernatoe!

En so het George en Issie Ryke die Sea Horse beskikbaar gestel. (Dit was die laaste funksie wat daar gehou is); Gerard Scholtz en André Wagener het skoongemaak en reggemaak; Ina Coetzee het koerantknipsels van Petra voorsien; Johan Visser het die groente geskenk, en ek, Annemarie Breytenbach (Pringlebaai) en Louise du Toit het die sop gemaak. Anuta Scholtz en Karin Donker en Estelle Raymond het brood op die tafel gesit. Dankie aan almal..

Petra Müller het die aand as "magies" beskryf, en nog skrywers en digters het aangedui dat hulle sal kom voorlees.

DINE VAN ZYL-WAGENER

ACROSS THE GREAT PAW DIVIDE



From below the edge of the stoep
a dark, furry hand
appeared.
From above,
on the stoep,
a pink-padded paw
stretched down
to delicately touch
the finger-tips
of the proffered hand.

The domestic tabby
and the wild baboon,
having thus greeted each other,
return
to their usual
morning business.

DEBBY DE VRIES



30 JAAR VAN WONDERLIKE TYE SAAM

Ons herdenk vanjaar die 30ste bestaansjaar van die Rooiels Belastingbetalersvereniging. 'n Besondere prestasie. Dit is 'n jeugdige en energieke 30 jaar. Die REBV groei van krag tot krag en bring deur sy kontinuiteit en Visie 'n gesamenlike gemeenskapsfokus.

Ons beplan 'n spesiale uitgawe van die Bries om dit te vier. Ons hoor graag van spesiale mylpale en magiese oomblikke en wat Rooiels vir jou spesiaal maak. 'n Vreugde gedeel is 'n vreugde vermenigvuldig!

WE ARE PLANNING A SPECIAL EDITION OF THE BREEZE TO CELEBRATE RERA'S 30 YEARS CARING FOR ROOIELS. PLEASE LET US KNOW OF YOUR PERSONAL MAGIC MOMENTS HERE OR WHAT MAKES ROOIELS SO SPECIAL TO YOU.



GO AHEAD - SPEED AND MAKE MY DAY



At 19:05 on Monday 26 May 2002 at 19.05 in pouring rain and by the headlights of two trucks, we sipped rain soaked champagne whilst celebrating the almost complete first legal speed bump in Rooiels. Phyll kindly spent the next two days moving rocks and soil and cleaning up the area.

For the sceptics, yes it is completely legal! No I do not have any relatives or friends in the Overstrand Municipality nor did I bribe anyone. This speed bump took two years of tenacious negotiations with three traffic department chiefs and only after supplying videos, photos and written data about the speedsters did they finally consent to speed bumps in Rooiels.

The next hurdle was to get the correct type of speed bump approved by the engineering department. This process was quite amusing, as a number of exotics had been proposed to them. These included gum poles laid in the road, ditches in the road, choked roads, metal tyre rippers, concrete pipes across the road, tar and sand bumps and fire hoses filled with sand, to mention a few.

We suggested the brick system, similar to the Rooiels entrance, and drew up plans of the proposed legal system, which the engineering department immediately agreed to. The speed bump works extremely well, most residents (except resident speedsters) are happy and many positive comments have been received.

The door is now open for many more legal speed bumps in problematic sections.

ED MCNEIL

(Ed, Baie dankie vir die inisiatief, die volgehoue druk en die feit dat jy uit jou eie sak hierdie spoedbult laat oprig het, maar ons voel dit bly steeds die plig van die Munisipaliteit om na ons paaie en spoedbeheermaatreëls om te sien. Die REBV is tans besig met onderhandelinge vir grond spoedbulte in Rooiels. Hou die kennisgewingbord en webwerf dop vir ons voorstelle en benut asseblief die geleentheid tot kommentaar. Red.)

RERA COMMITTEE 2002

Chairperson

Public Relations: Estelle Raymond
tel: h: (021) 976 7116 w: (021) 807 3151
Rooiels: (028) 273 8661 Cell: 083 230 9658
e-mail: eraymond@mweb.co.za

Vice-Chairperson

Treasurer

Publications & Holiday Programmes: Gerard Scholtz
Tel: (028) 273 8539
e-mail: scholtzg@freemail.absa.co.za

Secretary

Website Development & Maintenance: Julia Aalbers
tel: (021) 976 4378
e-mail: jaalbers@icon.co.za

Hacks:

Hettie Claassens
tel: 021 424 4644/028 273 8472
e-mail: comzone@global.co.za

Federation of Ratepayers:

Shirley Richter
Tel: (028) 273 8027
E-mail: irichter@mweb.co.za

Conservation:

Debby de Vries
Tel: (028) 273 8037
E-mail: rooiels@isat.co.za

Small Holdings

Postbox & Council Watch: Mike Harrison (Co-opted)
tel: (028) 273 8569

Although not co-opted, Geoff Harris (028 273 8164) will keep an eye on the Grootpad/Clarence Drive & Tollroad Developments and Basil Moss will look after Roads, Waste Management & Housekeeping (083 280 0163)

VISIT/BESOEK: WWW.ROOIELS.ORG.ZA

BRIES KOMITEE: GERARD SCHOLTZ (REDAKTEUR) ESTELLE RAYMOND, CHRIS BURLOCK, DEBBIE DE VRIES EN EVETTE WEYERS. GEOFF HARRIS EN ANUTA SCHOLTZ PROEFLEES
DIE DRUK VAN HIERDIE BRIJS IS MOONTLIK GEMAAK DEUR 'N RUIM SKENKING VAN DIE ROOIELS
BOOTKLUB.